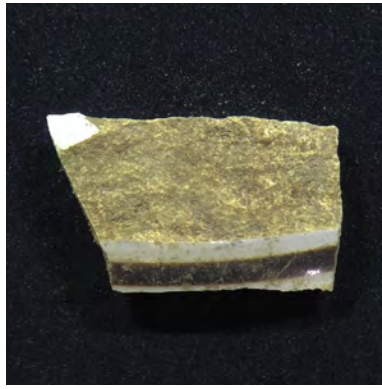


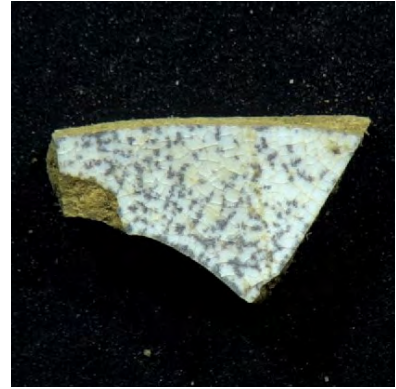
Digging History Project
Sample of Artifacts Recovered at the Museum of Cape May County



White glazed ceramic rim sherd
with purple outline (999155)



White glazed ceramic sherd with
brown line (801327)



White glazed ceramic sherd with
black speckles (801248)



White glazed ceramic sherd with
green detailing (801344)



Glazed creamware ceramic sherd
(999093)



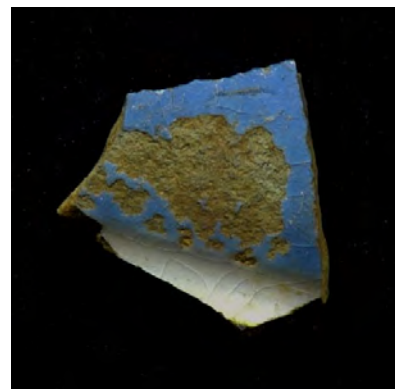
White glazed ceramic sherd with
green and black detailing
(999093)



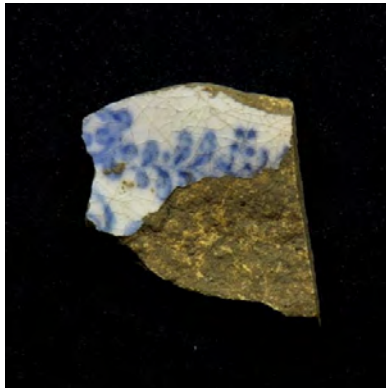
White glazed ceramic sherd with
black floral and speckle detailing
(999093)



White glazed ceramic rim sherd
(999093)



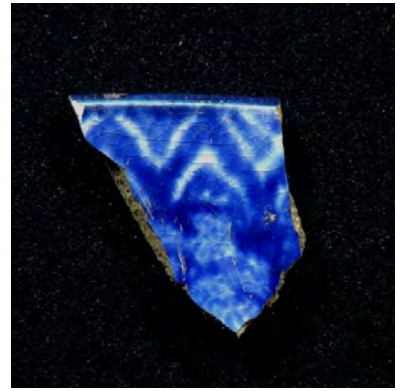
White to light blue glazed ceramic
sherd (801446)



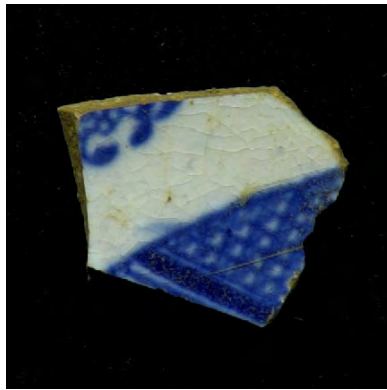
White glazed ceramic sherd with blue floral detailing (999107)



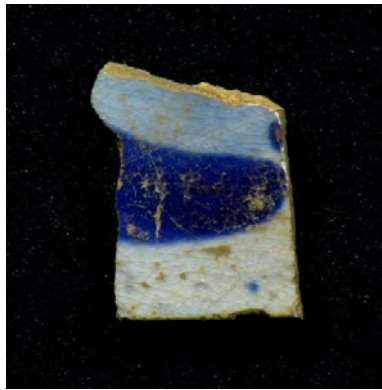
Blue glazed ceramic rim sherd with scalloped edges (999090)



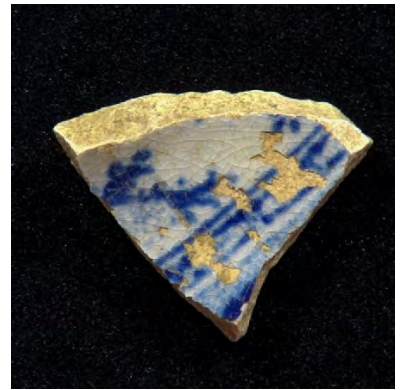
Blue and white glazed ceramic rim sherd with zigzag detailing (999148)



White glazed ceramic sherd with blue detailing (801346)



White glazed ceramic sherd with dark blue and light blue detailing (801545)



White glazed ceramic with blue detailing (802703)



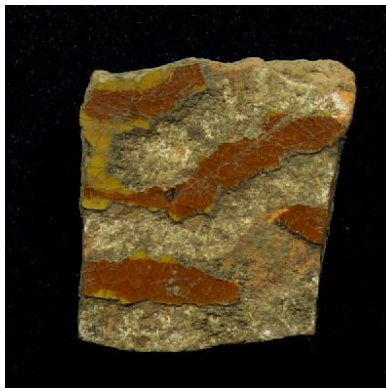
Red glazed earthenware base sherd (999092)



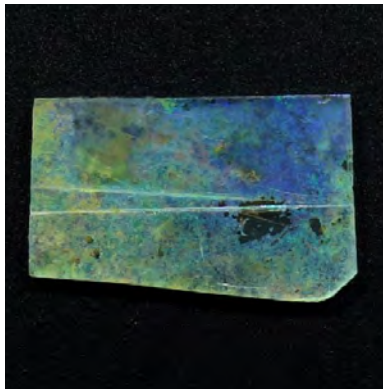
Brown glazed earthenware sherd (801583)



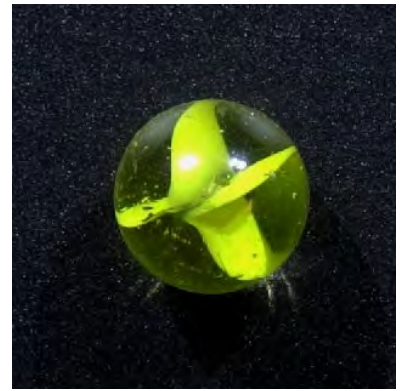
Dark brown glazed earthenware rim sherd (999094)



Glazed red and yellow striped slip on earthenware sherd (801312)



Historic glass (0006)



Green and clear glass marble (999156)



Twine (801168)



Twine or fabric (801596)



Rusty 18th or 19th Century square nail (801625)



19th Century square nail (801515)



Hammered copper (802796)



Copper spikes (801611)